

TEHNIČNI PRAVILNIK



Državnega Prvenstva in Pokalnega prvenstva

Razred 2 DP/SP	Rotax-MICRO MAX
Razred 3 DP/SP	Rotax-JUNIOR
Razred 4 DP/SP	Rotax- MAX
Razred 5 DP/SP	Rotax-DD2
Razred 6 SP	Rotax-DD2 Masters

2015

SLO DODATEK TEHNIČNEGA PRAVILNIKA RMC 2015 ZA DRŽAVNO IN POKALNO PRVENSTVO

3.0 **KART**

3.1. **OKVIR**

Tekmovalec lahko na tekmovanje prijavi samo 1 okvir

Pri Rotax MAX je uporaba sprednjih zavor prepovedana

Pri MICRO MAX je možna uporaba okvirja do max. medosne razdalje 950mm

Pri razredih R2, R3, R4 in R5 je obvezna uporaba sprednjega spojlerja po CIK-u (hom. do 2020)

(glej prilogo: **PRILOGA 3.1. – OKVIR**)

3.8 **MINIMALNA TEŽA** (ŠPORTNI PRAVILNIK RMC 2015)

MICRO MAX – Minimalna dovoljena teža **105 kg** ,(Vozilo z voznikom merjeno po dirki)

JUNIOR - Minimalna dovoljena teža **145 kg** ,(Vozilo z voznikom merjeno po dirki)

MAX - Minimalna dovoljena teža **165 kg** ,(Vozilo z voznikom merjeno po dirki)

DD2 - Minimalna dovoljena teža **173 kg** ,(Vozilo z voznikom merjeno po dirki)

DD2 MASTER Minimalna dovoljena teža **180kg** ,(Vozilo z voznikom merjeno po dirki)

4. **GUME** :

Vse gume morajo biti kupljene pri organizatorju, tekmovanja in označene z bar kodo.

Za vsako kategorijo lahko tekmovalec uporabi :

1 set SLICK pnevmatik + 1 rezervna pnevmatika

1 set WET pnevmatik + 1 rezervna pnevmatika

Rotax Micro Max

Mojo C2, spredaj 4,0 x 10 -5

Mojo C2 , zadaj 5,0 x 11 -5

Mojo Wet, spredaj 4.0 x 10-5

Mojo Wet, zadaj 5.0 x 11 -5

8. **OLJA – MAZIVA** :

- Gorivo kupljeno na bencinski črpalki, maksimalno 98 oktanov

- Za 2% zmes se sme uporabljati samo olje rotax XPS – kart -2 stroke (CIK homologacija NO.110162/01) kat. Št. 297460 , v menjalnikih se sme uporabljati olje XPS- kart – tec kart gear oil kat.št. 25113. Za Rotax Micro, Mini , Junior, Senior, Max. Olje za DD2 pa olje z oznako XPS kart tec DD2 kart gear oil kat.št. 25474.

9.0 **MOTORJI** :

Lahko se uporabljajo motorji :

Rotax MAX prve generacije

Rotax MAX prve generacije z uplinjačem Dellorto VHSB 34 SX EVO

Rotax MAX prve generacije z vgrajenim »upgrade» kit-om EVO

Rotax MAX EVO

Tekmovalec lahko na tekmovanje prijavi 2 motorja

- 9.2 Uporabljajo se lahko samo motorji kupljeni pri pooblaščenem uvozniku – Sportstil Kart d.o.o in plombirani, servisirani samo pri pooblaščenem servisnem centru :
Slovenija : Sportstil Kart d.o.o , Ljubljana
Hrvaška: AKK podravina, Koprivnica

Vsak motor mora imeti potrjen ID karton od serviserja in opravljeno avtorizacijo za tekoče tekmovalno leto

9.1 Rotax Micro, Junior, Max, DD2 :

- 1.1 SKVIŠ : 2.50 +/- 0.06 Micro
1.2 SKVIŠ : 1.40 +/- 0,06 Junior,
1.20 +/- 0,06 Senior
1.30 +/- 0,06 DD2

11. VŽIGALNI SISTEM :

11.9 **Prepovedana uporaba NGK svečk.**

15.1 UPLINJAČ :

Uporablja se lahko uplinjač Dellorto VHSB 34 z oznako SX ali QS kupljen pri organizatorju tekmovanja

Vsi uplinjači morajo biti avtorizirani, pregledani in plombirani s strani organizatorja

Vsakršna dodelava , poseg v uplinjač ali odstranitev plombe je prepovedano ! (diskvalifikacija)

ROTAX DD2

1.10 **SVEČKE:** NGK niso dovoljene !

14.1 **PRESTAVNO RAZMERJE :** 34/63 , 35/62 (STANDARD) , 36/61

17.1 **UPLINJAČ:** glej 15.1

ROTAX MICRO MAX

STAROST: 7* - 12 let

OKVIR: dolžine do 950mm

PRESTAVNO RAZMERJE : Na motorju 14 zob

UPLINJAČ : enako kot Max 15.1 in DD2 17.1

IZPUŠNI KOLEKTOR: fi 18mm (kataloška št. 273192)

TESNILO : (kataloška št. 450360)

VLOŽEK IZPUHA: 22mm (kataloška št. 273098)

* V kolikor je voznik nastopal vsaj eno leto v razredu R1



ROTAX MAX Challenge Technical Regulations 2015

(The Technical Regulations 2015 replace the Technical Regulations 2014)

Edition 2014 12 12

ZA MOTORJE ROTAX MAX PRVE GENERACIJE

ZA MOTORJE ROTAX MAX EVO

General

Categories

Karts used in the Rotax Mojo MAX Challenge (RMC), Rotax Mojo MAX Challenge GRAND FINAL (RMCGF) and International Rotax Mojo MAX Challenge Events (IRMCE) are divided into the following classes:

125 Junior MAX

125 MAX / Masters

125 MAX DD2 / Masters

Amount of equipment

For each RMC race event (from qualifying practice to the final) following maximum amount of equipment is allowed:

1 chassis

2 sets of dry tires + 1 front + 1 rear spare tire

2 sets of wet tires + 1 front + 1 rear spare tire

2 engines

Equipment

Chassis 125 Junior MAX and 125 MAX/Masters

For national RMC's any chassis sanctioned by an authorized Rotax distributor is allowed. Maximum diameter of rear axle = 50 mm, minimum wall thickness according to CIK-FIA rules.

At IRMCE and RMCGF chassis with a valid CIK-FIA homologation only are allowed.

Any brake system must have a valid CIK-FIA homologation.

Front brakes are not allowed In the 125 Junior MAX and 125 MAX/Masers class.

Chassis 125 MAX DD2/Masters

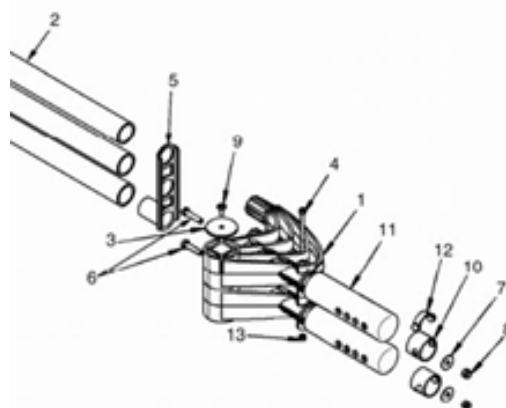
For all national RMC, IRMCE and the RMCGF 125 MAX DD2/Masters classes, chassis approved by Rotax only (see <http://www.rotax-kart.com/Max-Challenge/MAX-Challenge/Approved-Chassis-125-MAX-DD2>) are allowed to be used.

Chassis must be designed according to CIK-FIA rules for shifter classes (front- and rear brakes mandatory).

Any brake system must have a valid CIK-FIA homologation.

Rotax rear tire protection system is mandatory to be used. Either 2-tube version or 3-tube version, third tube might be mounted above or below the two main tubes. No part shall be added or removed from original content (except safety wire or bolt connection between pos. 1 and pos. 2 as well as number plate with support).

Rotax original (orange or red) protection rollers only are allowed to be used.



Bodywork 125 Junior MAX and 125 MAX

In accordance with regulations of national Federations or CIK-FIA.

At RMCGF and IRMCE bodywork with current CIK-FIA homologation validity only is allowed.

Bodywork 125 MAX DD2/Masters

In accordance with regulations of national Federations or CIK-FIA.

At RMCGF and IRMCE bodywork with current CIK-FIA homologation validity only is allowed. Rotax rear tire protection system only is allowed.

Tires

At all RMC, IRMCE and RMCGF following tires have to be used

125 Junior MAX

Dry	Mojo D1	front 4.5 x 10.0 – 5	rear 7.1 x 11.0 – 5
Wet	Mojo W2	front 4.5 x 10.0 – 5	rear 6.0 x 11.0 – 5

125 MAX/Masters

Dry	Mojo D2	front 4.5 x 10.0 – 5	rear 7.1 x 11.0 – 5
Wet	Mojo W2	front 4.5 x 10.0 – 5	rear 6.0 x 11.0 – 5

125 MAX DD2/Masters

Dry	Mojo D3	front 4.5 x 10.0 – 5	rear 7.1 x 11.0 – 5
Wet	Mojo W2	front 4.5 x 10.0 – 5	rear 6.0 x 11.0 – 5

Strictly no modifications or tire treatment allowed.

Recommended equipment to detect tire treatment is Mini-RAE-Lite.

Threshold value of maximum 4 ppm is recommended.

Tires must be mounted according to the sense of rotation defined on the tire.

Data acquisition

Systems which permit the reading/recording of following data only are allowed:

Lap time

Engine rpm (by induction on the high tension cable)

Two indications of temperature

The speed of one wheel

Acceleration in X/Y direction

Position (via GPS system)

Steering wheel angle sensor

Connection of the data acquisition system to the original Rotax battery is allowed.

During free practice also telemetry systems are allowed.

Composite materials

Composite materials (carbon fiber etc.) are banned except for the seat and the floor tray. Alloys from different metals/substances are not considered as composite materials.

Safety equipment

For RMC overalls, helmets, kart shoes, gloves and other kind of driver protection must comply with the regulations of the national Federation or CIK-FIA.

For IRMCE and the RMCGF article 3 of CIK-FIA technical regulations apply.

Fuel/Oil

Unleaded fuel 95 - 98 octane's.

XPS-KARTTEC 2-stroke oil (CIK homologation no. 113340/01 and 113340/02).

Advertising on engines

No sponsor stickers (except ROTAX, BRP, MOJO, XPS, original SODI KART badges) are allowed on the engine and engine accessories

except Rotax, BRP, Mojo, XPS and following plates attached to the cylinder.



Engine sealing, Scrutinizing

At RMC, IRMCE and the RMCGF, engines which are conform to the following technical regulation only, are legal to be used.

For national RMC's, engines which have been checked and sealed by the Authorized Rotax Distributor of this territory or one of the Service Centers appointed by the Authorized Distributor, are allowed to be used only.

For IRMCE all Authorized Rotax Distributors and their Service Centers only are allowed to check and seal engines.

Authorized Distributors and Service Centers which are legal to check and seal engines are listed at <http://www.rotax-kart.com/Find-a-Dealer>.

For RMCGF Rotax only is allowed to check and seal engines.

By sealing an engine the ROTAX Authorized Distributors and their Service Centers take over the responsibility for the conformity of the engine with according to the valid Technical Regulation. Also a brand new engine must be checked according to the Technical Specification before sealing.

The engines have to be sealed with specific ROTAX engine seals (black anodized aluminum seal with "ROTAX"-logo and a 6 digit serial number and a barcode).

Seals with barcode only are legal to be used.

Further legal seals are:

Black anodized aluminum seals with "JAG"-logo and 6 digit serial number

Red anodized aluminum seals with "JAG"-logo and 6 digit serial number

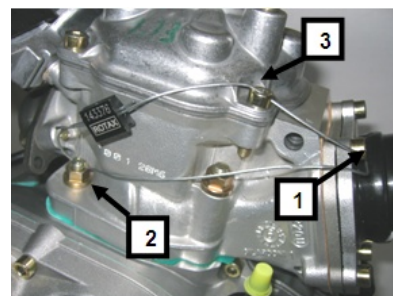
Red anodized seals with "KORRIDAS" and 6 digit serial number

Blue anodized seals with 6 digit serial number (Kombikart)

By means of the steel cable the engine must be sealed on one Allen screw (pos. 1) of the intake flange, on one stud screw (pos. 2) of cylinder and one Allen screw (pos. 3) of the cylinder head cover (see attached pictures).

After sealing the engine seal thread must be squeezed using caliper ROTAX part no. 276 110 (see picture of engine seal).

It is not allowed to pass the end of the sealing wire through the seal a second time (as shown in picture only).



At every new sealing of an engine the ROTAX Authorized Distributor or Service Centers that checks and seals an engine is responsible for following indications at the Engine Identity Card which belongs to the owner of the engine.

Serial no. of the engine

Serial no. of the engine seal

Stamp and signature of the Authorized Distributor/Service Center.

At scrutineering the driver has to present:

The engine(s) with the undamaged engine seal(s)

The Engine Identity Card(s), showing the matching engine serial no.(s), the matching engine seal no.(s), the stamp(s) and signature(s) of the Authorized Distributor or Service Center that has (have) checked and sealed the engine(s).

ROTAX
NEW AGE KARTING

ENGINE IDENTITY CARD

125 JUN. MAX
 125 MAX
 125 MAX DD2

Engine Serial No: 6583420
ROTAX Seal No: 297461

Engine sold by:
Joe Public Motorsports Ltd
Authorized Service Center, Rotax Karting
Victoria Street 264
Sidney NSW 2000, Australia
Stamp of Authorized Distributor/Service Center for ROTAX Kart Engines

Signature: [Signature] Date: 12/12/2014

The ROTAX authorized Distributor organizing a national RMC may appoint before every RMC race a neutral Service Center which will be the only one allowed to re-seal an engine between scrutineering and the final in the case of an engine failure.

During an IRMCE ROTAX Authorized Distributors and their Service centers are not allowed to re-seal an engine between scrutineering and the final.

The sealing of engines helps to reduce the times for scrutineering at races as during the race event just the accessories (carburetor, exhaust, radiator.....) must be checked.

Of course scrutineers can request to open and re-check an engine according to the Technical Specification, before or after a race or in case of a protest. If an engine seal has been broken (for which reason ever), the engine has to be checked completely according to the Technical Specification and must then be re-sealed by an ROTAX authorized Distributor or one of its Service Centers.

FOR ALL COMPONENTS OUTSIDE THE ENGINE SEAL, THE COMPETITOR IS RESPONSIBLE TO ASSURE THE CONFORMITY WITH THE TECHNICAL REGULATIONS.

Modifications, Repairs and Additions

Modifications

Neither the engine nor any of its ancillaries may be modified in any way. "Modified" is defined as any change in form, content or function that represents a condition of difference from that originally designed. This is to include the addition and/or omission of parts and/or material from the engine package assembly unless specifically allowed within these rules. The adjustment of elements specifically designed for that purpose shall not be classified as modifications, i.e. carburetor and exhaust valve adjustment screws.

The repair of a thread on the crankcase (maximum of one threaded hole per engine) using a "heli-coil" or similar is allowed (except threads of the pick-up fixation).

The repair of a thread on the cylinder (maximum of one threaded hole per engine) using a "heli-coil" or similar is allowed.

Exception: the threads located under the crankcase to fix the crankcase on the engine mount may be repaired as needed.

Genuine ROTAX components only that are specifically designed and supplied for the 125 Junior MAX-, the 125 MAX and the 125 MAX DD2 engine are legal, unless otherwise specified.

ANYTHING WHICH IS NOT EXPRESSLY ALLOWED IN THE TECHNICAL REGULATIONS IS FORBIDDEN.

Internal additions

No additional material may be added except in the case of engine repairs and shall only restore the engine or components to original specifications.

The use of thermal barrier coatings/ceramic coatings on or in the engine and on or in the exhaust system is prohibited.

The use of anti-friction coatings in or on the engine/engine components is prohibited.

Legal additions

Chain guard, engine mount, temperature gauge and tachometer/hour meter, catch cans for liquids with mounting brackets, supplementary bracket for DENSO ignition coil (only allowed if the original mounting position of the Denso ignition coil is in conflict with a chassis component).

Customizing the cylinder head cover by painting is legal.

Sensor for exhaust gas temperature (see exhaust systems).

Non-tech items

Non-original fasteners, circlips, washers, throttle cable housing, fuel and pulse line (type and size) as well as length of coolant hoses are allowed unless otherwise specified.

Measurements

When taking any dimensional reading, of the following technical regulation, in the order of accuracy of 0,1 mm or even more precise, the temperature of the part must be between +10°C and +30°C.

Before taking any decision based on this regulation a check for available Bulletins is mandatory.

They can be found under <http://www.rotax-kart.com/Max-Challenge/MAX-Challenge/Regulations>

To avoid excessive noise and exhaust emissions revving the engine in the servicing park is not allowed (except a short function test – 5 seconds maximum)

Technical Specification (within the engine seal) for ROTAX kart engines

125 Junior MAX/ evo

125 MAX/ evo

125 MAX DD2 /evo

Squish gap

125 Junior MAX/evo minimum = 1,20 mm

125 MAX/evo minimum = 1,00 mm

125 MAX DD2/evo minimum = 1,30 mm

The squish gap must be measured with a certified slide gauge and by using a 2 mm tin wire (Rotax part no. 580 130).

The crankshaft must be turned by hand slowly over top dead center to squeeze the tin wire.

The squish gap must be measured on the left and right side in the direction of the piston pin.

The average value of the two measurements counts.

Combustion chamber insert

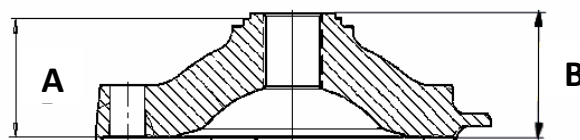
Cast identification code has to be "223 389" or "223 389 1" or

"223 389 2" or 223 389 2/1" or "223 389 2/2".

Casted wording "ROTAX" and/or "MADE IN AUSTRIA" must be shown.



Heights of combustion chamber insert have to be 27,55 mm with a tolerance of +0,0/-0,1 mm (A) and 28,80 mm with a tolerance of +/- 0,2 mm (B).

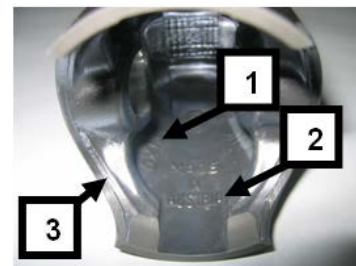


The profile of the combustion chamber insert has to be checked with a template (ROTAX part no. 277 390). The crack of light between the template and the profile of the combustion chamber insert has to be the same over the whole profile.

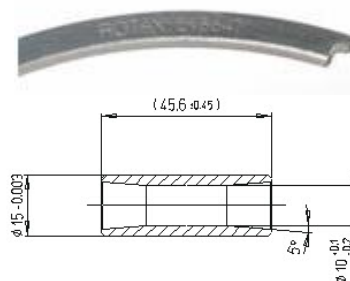


Piston with ring assembly

Original, coated, aluminum, cast piston with one piston ring. The piston has to show on the inside the cast wording "ELKO" (1) and "MADE IN AUSTRIA" (2). Machined areas are: Top end of piston, outside diameter, groove for the piston ring, bore for the piston pin, inside diameter at bottom end of piston and some pre-existing factory removal (3) of flashing at the cut out of the piston skirt. All other surfaces are not machined and have cast surface. Any mechanical treatment or rework of the piston is forbidden, (e.g. removal of carbon deposits). Cleaning without changing the original surface is allowed.



Original, magnetic, rectangular piston ring.
Ring height : 0,98 +/- 0,02 mm. Piston ring is marked either with "ROTAX 215 547" or "ROTAX 215 548".



Piston pin

Piston pin is made out of magnetic steel.
Dimensions must be according to the drawing.
The minimum weight of the piston pin must not be lower than 32,10 grams.

Cylinder

Light-alloy-cylinder with GILNISIL-plating. Any re-plating of cylinder is not allowed.
Maximum bore of cylinder = 54,035 mm (measured 10 mm above the exhaust port).
Cylinder has to be marked with the "ROTAX" logo (see pictures below).

125 Junior MAX

Cylinder with one main exhaust port but without exhaust valve.
Cylinder has to be marked either with identification code 223 994, 223 998 or 223 999



125 MAX

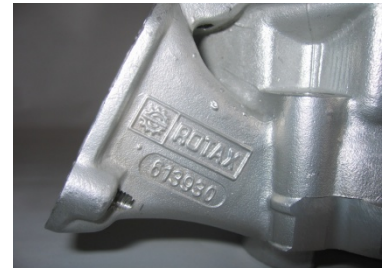
Cylinder with one main exhaust port and exhaust valve.
Cylinder has to be marked either identification code 223 993, 223 996 or 223 997



125 MAX DD2

Cylinder with one main exhaust port and two side exhaust ports and exhaust valve.

Cylinder has to be marked either identification code 613 933, 613 931 or 613 930



Height of cylinder

(measured with a digital caliper min. length 200mm).

125 Junior MAX and 125 MAX: 87,00 mm -0,05/+0,1 mm

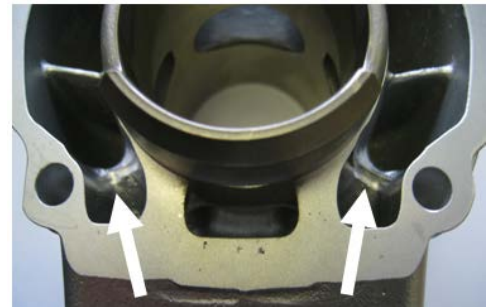
125 MAX DD2: 86,70 mm -0,05/+0,1 mm



Cylinder surfaces

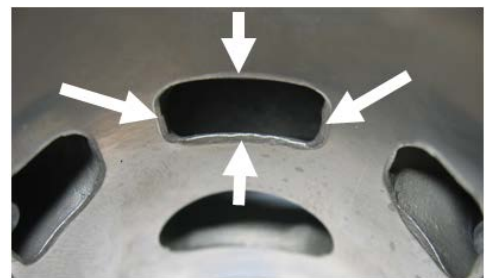
All transfer ports and passages have cast finish surface except some removal (done by the manufacturer) of cast burr at the inlet passage, exhaust port and passages. All ports have chamfered edges to prevent ring snagging. Any additional machining is not permitted.

The top edge of exhaust port may show some pre-existing machining from the manufacturer. The sealing flange for the exhaust socket may show signs of machining from the manufacturer.



All ports have chamfered edges.

Any additional machining is not permitted.

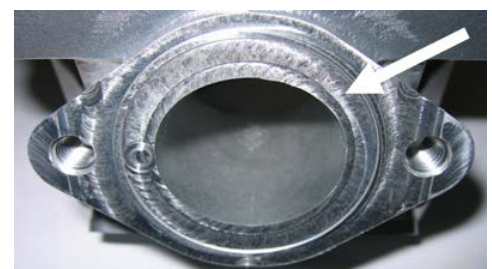


Cylinders marked 223 993, 223 994 and 613 933 the upper edge of the central boost port may show factory machining.



The flange for the exhaust socket may show either cast finish or machined surface.

Machined surface can be either flat or show a circular sealing bump.



The top edge of the exhaust port may show either just a cast finish surface (left picture) or signs of a CNC machining (central picture) or signs of CNC machining in combination with signs of manual grinding (right picture).



The exhaust port may show partial manual grinding done by the manufacturer to eliminate minor casting defects and/or to eliminate the NIKASIL burr at the end of the NIKASIL plating (right picture).

Exhaust port timing

The "exhaust port timing" (distance from the top of the cylinder to the top of the exhaust port) has to be checked by means of the template (ROTAX part no. 277 397).

Insert the template (take care to use the correct gauge JUN, MAX, DD2) into the cylinder, that the template is touching the cylinder wall and that the finger of the template is located in the middle of the exhaust port (highest point).

Move the template upwards, until the finger is touching the top edge of the exhaust port. Insert a filler gauge between the top of the cylinder and the template. It must not be possible to fit the feeler gauge specified below.



125 Junior MAX

Cylinder 223 999/998: 0,90 mm
 Cylinder 223 994: 1,10 mm

125 MAX

Cylinder 223 993/996/997: 0,75 mm
 At cylinders 223 993 the cylinder is also legal if the template doesn't fit in at all.

125 MAX DD2

Cylinder 613 933/931/930: 0,75 mm
 At cylinders 613 933 the cylinder is also legal if the template doesn't fit in at all.

Exhaust valve (125 MAX and 125 MAX DD2)

If the piston is moved in direction top of cylinder and first time covering completely the exhaust port, it must be possible to insert the exhaust valve gauge (Rotax part no. 277 030) until it stops at the surface of the cylinder (a feeler gauge of 0,05 mm must not be possible to fit in at any area around).

Modifying the gasket (Rotax part no. 250 231) between the cylinder and the exhaust valve housing is illegal.



Inlet system

Inlet manifold is marked with the name "ROTAX" and the identification code

"267 915" 125 Junior MAX and 125 MAX .

"267 410" 125 MAX DD2.

Some factory flash removal may be present at the conjunction of the inside contour and the carburetor stop mounting face. This is a manual trimming operation consisting of a small corner break of less than 3 mm in width. No additional grinding or machining is permitted.

The reed valve assy. is equipped with 2 petal stops and 2 reeds, each having 3 petals.

The thickness of the reeds is 0,6 mm +/- 0,10 mm.

Crankshaft

Stroke 54,5 mm +/-0,1 mm

Con rod has to show forged numbers "213", "365", "367" or "362" on shaft.

Shafts of con rods "213", "365" and "367" are not machined and are copper plated.

Shaft of con rod "362" is not copper plated and blank (grey).

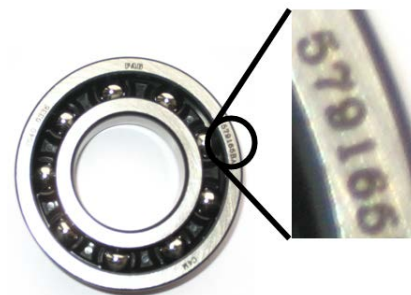
Grinding or polishing of shaft of con rod is not permitted.



Crankshaft main bearings

Crankshaft main bearing 6206 from FAG is allowed only.

(must be marked with code 579165BA or Z-579165.11.KL)



Balance shaft (125 Junior MAX and 125 MAX)

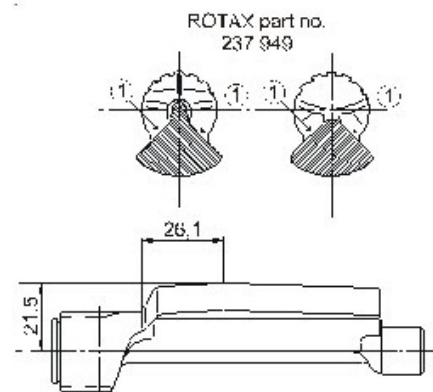
Balance shaft and balance gears must be installed.

Configurations of part no. 237 949 (equal with 237 948) only is legal.

Surface (1) is not machined and must show cast surface.

Measurement from center of balance shaft to outer diameter of fly weight of balance shaft at defined length must not be lower than specified.

The minimum weigh of the dry balance shaft must not be lower than: 255 grams for balance shaft ROTAX part no. 237 949 (equal with 237 948).



2-speed gearbox (125 MAX DD2)

Primary shaft with 19 teeth for 1st gear and 24 teeth for 2nd gear.

Idle gear for 1st gear has to have 81 teeth.

Idle gear for 2nd gear has to have 77 teeth

Crankcase

As supplied by the manufacturer. No grinding/polishing is permitted in the two main transfer passages as well as in the crank area.

Uncoated as well as black coated crankcases are legal to be used.

Technical Specification (outside the engine seal) for ROTAX kart engines

125 Junior MAX/evo

125 MAX/evo

125 MAX DD2/evo

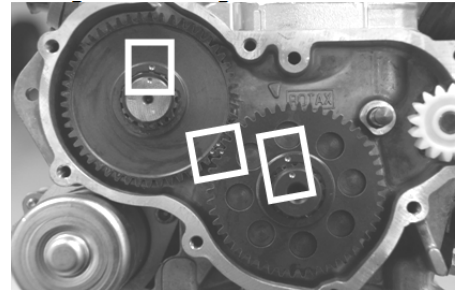
It is the responsibility of the competitor to check his equipment (all components outside the engine seal as mentioned below), to assure that his equipment is conforming to the technical specification below!

Balance drive (125 Junior MAX and 125 MAX)

Only steel balance gears are legal to be used.

Balance gears must be installed and must be aligned according to the instruction in the repair manual.

Mixing of steel balance gears of different width (6,0 and 9,0 mm) is strictly forbidden.



Balance drive (125 MAX DD2)

Balance drive gear must be fitted on crank shaft.

Balance gear must be fitted on primary shaft and must be aligned with the balance drive gear according to the instruction in the repair manual.

Version 1:

Fly weight of balance gear must show cast surface

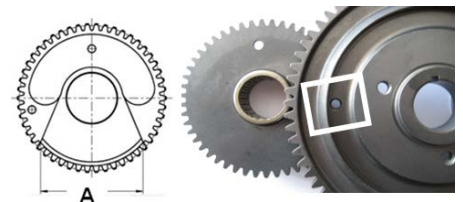


Version 2:

Fly weight of balance gear can show machined surface.

Dimension A (widest part of balance weight) must be either 53,0 mm +/- 0,5 or 57,0 mm +/- 0,5

The minimum weight of a dry balance gear including bearing must not be lower than 240 grams.



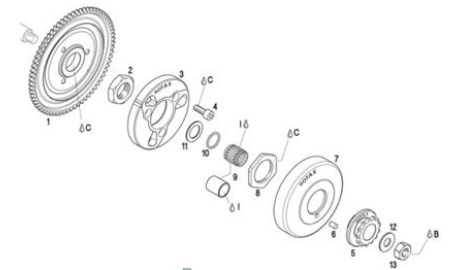
Centrifugal clutch

125 Junior MAX and 125 MAX

Engagement speed of centrifugal clutch at maximum 4.000 rpm (the kart without driver must start to move).

Both versions of clutch (item 3, with and without holes) are legal to be used.

O-ring (item 10) must be fitted and must assure an appropriate sealing between the clutch drum and the needle/plain bearing.



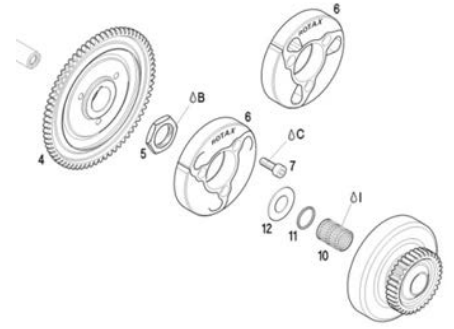
Signs of emission of grease from the needle/plain bearing into the clutch drum may not exceed the picture beside.

Contact area between clutch and clutch drum has to be dry at any time – no lubrication allowed.



125 MAX DD2

Engagement speed of centrifugal clutch at maximum 4.000 rpm (the kart without driver must start to move).
Both versions of clutch (item 6, with and without holes) are legal to be used.
O-ring (item 11) must be fitted.



Height of clutch

125 Junior MAX and 125 MAX:
125 MAX DD2:

Minimum = 11,45 mm
Minimum = 14,45 mm



Thickness of clutch shoe

Minimum = 24,10 mm

Measurement has to be done at the 3 open ends of the clutch, 5 - 10 mm from the machined groove (all clutch shoes must be completely closed at measurement - no gap).



Outer diameter of clutch drum

Minimum = 89,50 mm

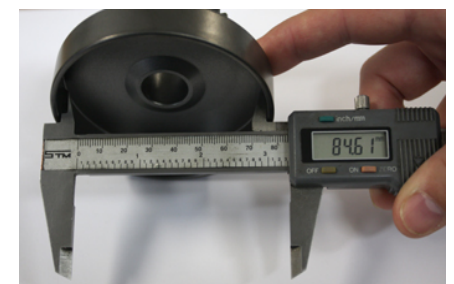
Diameter has to be measured with a sliding caliper just beside the radius from the shoulder (not at the open end of the clutch drum).



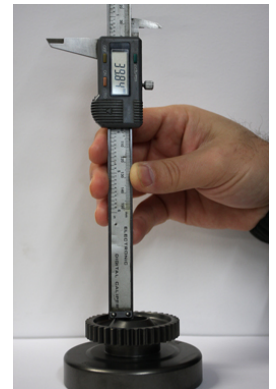
Inner diameter of clutch drum

Maximum = 84,90 mm

The inner diameter has to be measured with a sliding caliper. The measurement has to be done in the middle of the clutch drum (in the contact area between clutch and clutch drum).



Height of clutch drum with sprocket/primary gear
 125 Junior MAX and 125 MAX Minimum = 33,90 mm
 125 MAX DD2 Minimum = 39,50 mm



Primary drive (125 MAX DD2):

Original primary drive gears of following gear ratio options must be used only.

Following combinations are legal to be used.

Drive gear	Driven gear
32	65
33	64
34	63
35	62
36	61
37	60
38	59



A specific primary gear ratio may be determined for each race event by a "Bulletin".

Gear shifting (125 MAX DD2)

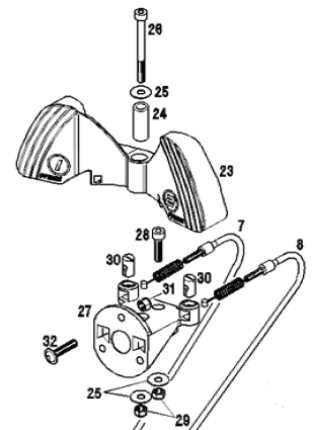
The 2-speed gearbox has to be operated from the steering wheel via two bowden cables.

To versions of original paddle shift systems are legal to be used.

Version 1, plastic shift paddles

Cutting of the original plastic shift paddles (item 23) or adding of pads to the shift paddles is allowed to adjust the paddle to specific steering wheels.

Original plastic steering wheel hub (item 27, Rotax part no. 660 640) must be used.



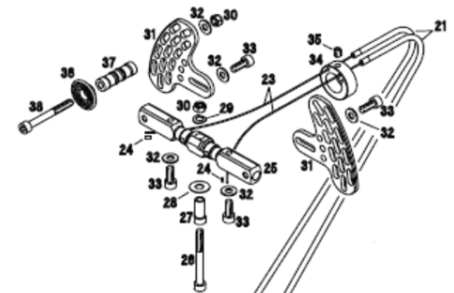
Version 2, aluminum shift paddles

Cutting of the original aluminum shift paddles or adding of non original parts is not allowed.

Mounting the shift paddles (item 31) on the bottom or top side of the whip (item 25) is an allowed adjustment.

Optional parts (items 36-38) can be mounted on the shift paddle (item 31) in any position.

Bending the aluminum shift paddles to align them to the steering wheel is an allowed adjustment.



Exhaust valve (125 MAX and 125 MAX DD2)

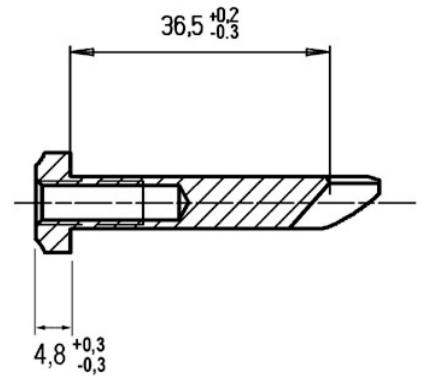
Two versions of original exhaust valve systems (pneumatic/electronic timed) are legal to be used.

Both systems have to be used as supplied with all components fitted.

Length of the exhaust valve (item 4 of pneumatic timing, item 2 of electronic timed exhaust valve) is 36,5 mm +0,20 mm/-0,30 mm.

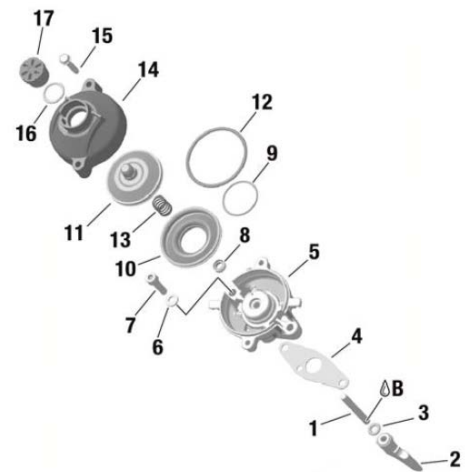
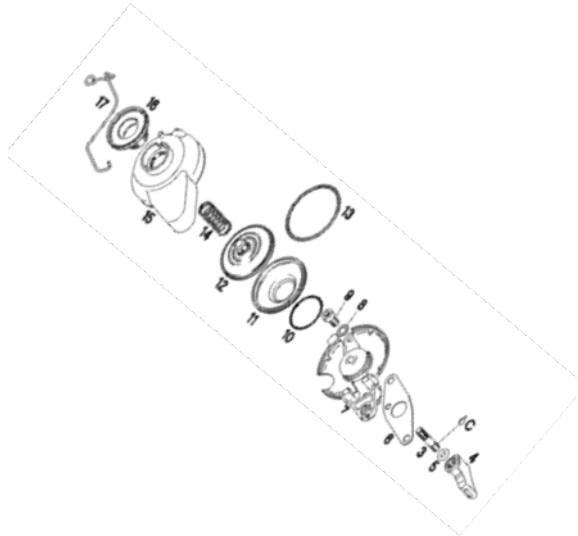
Width of collar is 4,8 mm +/-0,3 mm

Green colored exhaust bellow (item 11 of pneumatic timed exhaust valve, item 10 of electronic timed exhaust valve, Rotax part no. 260 723) only is legal to be used.



Version 1, pneumatic timed exhaust valve.

Version 2, electronic timed exhaust valve



Ignition system

Digital battery ignition, variable ignition timing, no adjustments possible.

Spark plug: DENSO Iridium IW 24 or IW 27 or IW 29 or IW 31 or IW 34

Spark plug cap must be marked with "NGK TB05EMA".

The marking of the pick-up must show the following numbers in the first line 029600-0710.

A steel ball (diameter 3-5 mm) placed on circular surface of the sensor must stay in the center of the circular surface.



Two versions of original ignition systems (Denso and Dellorto) are legal to be used.

Race officials may request at any time that the competitor replaces the ignition coil (Denso ignition system)/electronic box (Dellorto ignition system) with another unit provided by the race administration.

Version 1, Denso ignition system

The casting of the ignition coil has to show the following in casting "129000-" and "DENSO".

125 Junior MAX and 125 MAX

Ignition coil must show 3 pins at the terminal.

Connector housing of ignition coil must have either black or green color

Version with extension wire (number 265571 engraved as in picture) is not legal to be used any more as of 01.03.2012.

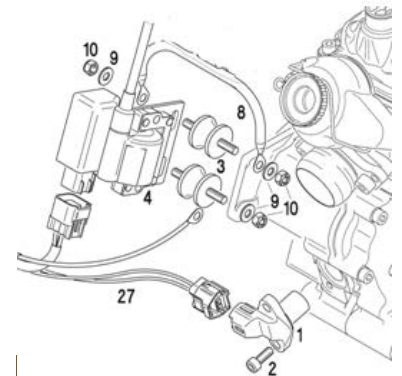
Minimum length of the high tension cable is 210 mm (from outlet of ignition coil to outlet of spark plug connector = visible length of cable).



The ignition coil has to be fixed by means of 2 original silent blocks to the gearbox cover.

In case a chassis component collides with the ignition coil, it is an allowed modification to use a supplementary extension bracket (rigid, solid metal, mounted at the original fixation holes of the gearbox cover) to avoid any collide.

To fit a second original mass cable (ROTAX part no. 264 910) is an allowed option



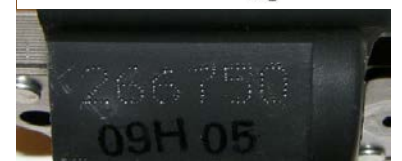
125 MAX DD2

Ignition coil must show 4 or 6 pins at the terminal.

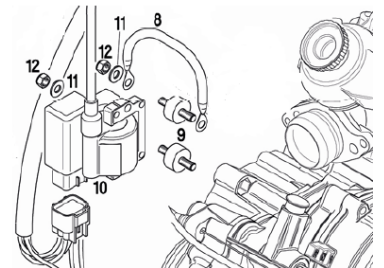
Connector housing of ignition coil must have either white or grey color.

Also ignition coils marked with number "266 750" are legal to be used.

Minimum length of the high tension cable is 210 mm (from outlet of ignition coil to outlet of spark plug connector = visible length of cable).



The ignition coil has to be fixed by means of 2 original silent blocks to the left side of the crankcase.



Mounting the ignition coil on the optional bracket (Rotax part no. 651 055) to the clutch cover is an allowed option.

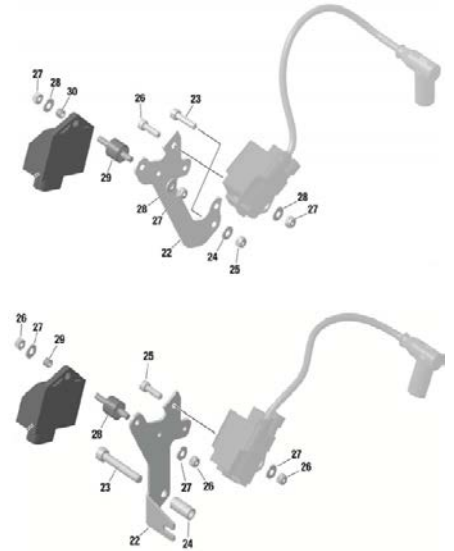
To fit a second original mass cable (ROTAX part no. 264 910) is an allowed option



Version 2, Dellorto ignition system

Ignition coil (same for all engines) with separate electronic box (ECU, specific for every engine).

Ignition coil and electronic box have to be fitted by means of the corresponding brackets and components according to the illustration (top illustration 125 Junior MAX and 125 MAX, bottom illustration 125 MAX DD2).



The visual appearance of the ignition coil must be identical with the pictures.

Ignition coil must show 2 pins at the terminal.

The ignition coil is labeled with two stickers, "BRP 666820" and "NIG 0105".

The ignition coil is still legal to be used also if one or both stickers disappeared.

Minimum length of the high tension cable of the ignition coil is 210 mm (from outlet of ignition coil to outlet of spark plug connector = visible length of cable).



The ground cable of the cable harness has to be connected to the engine at the rear, left Allen screw of the cylinder head cover.

The electronic boxes are labeled with stickers and are still legal also if the sticker disappeared.

125 Junior MAX: "666812, 125 Junior MAX evo"

125 MAX: "666814, 125 MAX evo"

125 MAX DD2: "666816, 125 MAX DD2 evo"

The electronic box has to be checked with the ECU tester (Rotax part no. 276 230) according to following procedure.

Disconnect engine cable harness from electronic box.

Connect ECU tester cable harness to electronic box.

Connect energy cable of ECU tester cable harness with the charging connector of engine cable harness.

The ECU tester will automatically detect the type of the ECU and will start a check program for the ignition timing and the timing for the exhaust valve.

The ECU tester has to show following results:

125 Junior MAX

ECU TEST OK

125 Junior MAX evo

125 MAX

ECU TEST OK

125 MAX evo

125 MAX DD2

ECU TEST OK

125 MAX DD2 evo

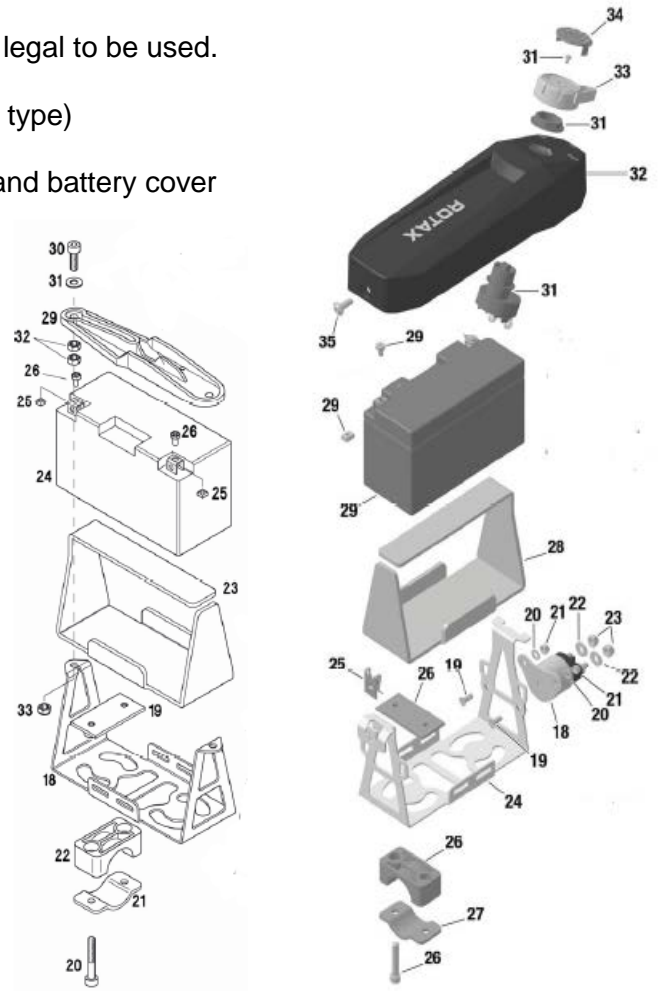


Battery, battery fixation

Original batteries with following specification only are legal to be used.
YUASA YT7B-BS (with and without Rotax branding)
ROTAX RX7-12B or RX7-12L (lithium iron phosphate type)

Battery must be fitted with the original battery clamp and battery cover (both versions left and right are legal) and must be fixed to the chassis with both clamps (all 4 screws).

Battery clamp must be mounted on the left side of the seat (valid for both versions).



Intake silencer

125 Junior MAX and 125 MAX

Intake silencer with integrated, washable air filter has to be used with all parts as shown at the illustration and has to be mounted on the support bracket with two screws (in dry and wet condition).

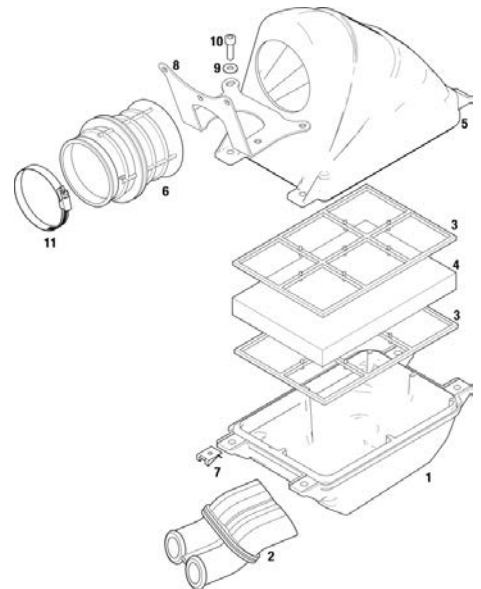
Intake silencer tube (pos 2) and carburetor socket (pos 6) are marked with the wording "ROTAX".

Intake silencer case bottom is marked on the inside with the Rotax part no. 225 015.

Intake silencer case, top is marked on the inside with the Rotax part no. 225 025.

Air filter (pos 4) must be installed as shown in the illustration between the two holders (pos 3) and must cover the complete area of the intake silencer case bottom (pos1).

Also at wet condition it is not allowed to attach anything to the air box to protect the air inlet from water spray.



125 MAX DD2

Intake silencer with integrated washable air filter as shown in illustration.

The intake silencer case (pos 1) is marked on the inside with the Rotax part no.

225 012 (4 clips) or

225 013 (5 clips).

The intake silencer cover (pos 2) is marked on the inside with the Rotax part no.

225 022 (4 clips) or

225 023 (5 clips).

Two versions of air filters (pos 3) are legal to be used.

Version 1, with integrated steel frame.

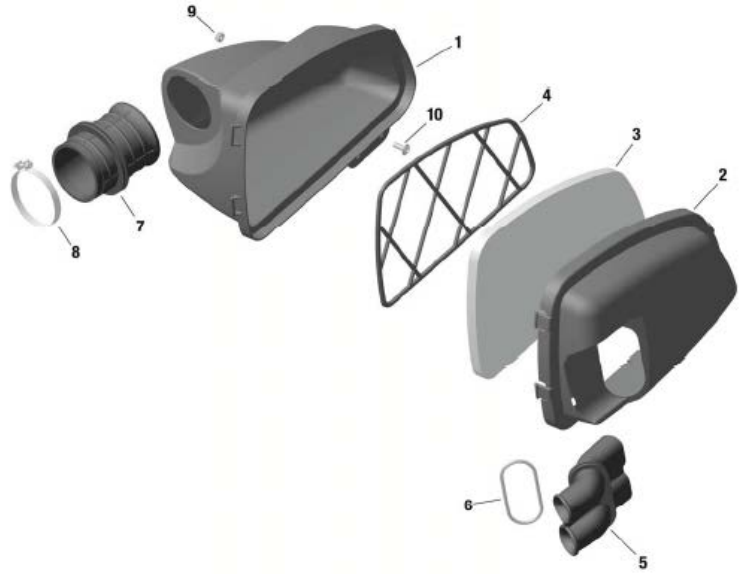
Version 2, with separate plastic frame (pos 4).

The air filter must be assembled between the intake silencer case and the intake silencer cover that the whole area of the intake silencer case is covered.

At intake silencer cover (pos. 2, Rotax part no. 225 022), it is mandatory to fit the O-ring (pos. 6) on the intake silencer tube (pos. 5).

Sealing the top of the airbox using adhesive tape is an allowed modification.

Also at wet condition it is not allowed to attach anything to the air box to protect the air inlet from water spray.



Carburetor

Dellorto carburetor, housing has to show the cast wording "VHSB 34"

Carburetor housing is stamped either with "QD", "QS" or "XS".

The complete inlet bore of the carburetor must show cast surface.

Optional carburetor plug screw marked "ROTAX" (ROTAX part no. 261 030) is legal to be used.

The two vent fittings must be connected with the original air vent hose min 155 mm (Rotax part no. 260 260). The location of the opening has to be placed at the rear side of the carburetor

Settings of the carburetor adjustment screws (idle and idle air) are free.

The position of the jet needle is free.

All jets must be correctly seated and securely fitted at any time (tightend)!

A minimum required size of main jet may be determined for each race event by a "Bulletin".



The height of the two arms of the float lever must be within the slot of the carburetor gauge (Rotax part no. 277 400) by their normal weight measured at carburetor housing without gasket in reverse upright position.



Needle valve assembly stamped "150"

Needle of needle valve marked with diamond symbol "INC" only.

Start jet is stamped with the digits "60".



Specific regulation for Dellorto VHSB 34 QS and QD

Carburetor slide shows digits "40" in casting.

Jet needle must be stamped with "K98".

Two floats marked "3,6 gr" or "5,2 gr" are legal to be used only (valid for 125 Junior MAX and 125 MAX).

Two floats marked "5,2 gr" are legal to be used only (valid for 125 MAX DD2).



Needle jet

Stamped with "FN 266"

Total length: 54,00 +/- 0,3 mm

Length of bottom section: 11,50 +/- 0,2 mm

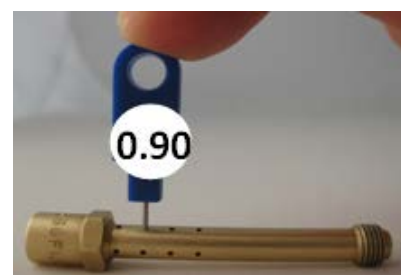


Top bore diameter 2,60 +/- 0,15 mm (measured 2 mm inside)



4 x4 cross holes diameter:

Plug gauge 0,90 mm may not enter one of the 16 cross holes (use jet gauge set Rotax part no. 281 920).



Idle jet

Idle jets stamped 30, 35, 40, 45, 50, 55 and 60 only are legal to be used. It is not mandatory that idle jet and idle emulsion tube show the same size.

Plug gauge 0,65 mm may not enter the bore of the idle jet 60 (use jet gauge set Rotax part no. 281 920).



Idle emulsion tube:

Idle emulsion tube stamped 30, 35, 40, 45, 50, 55 and 60 are legal to be used.

It is not mandatory that idle emulsion tube and idle jet show the same size. Plug gauge 0,65 mm may not enter the bore (use jet gauge set Rotax part no. 281 920).



Plug gauge 0,65 mm may not enter one of the 4 cross bores (use jet gauge set Rotax part no. 281 920).



Carburetor insert

Carburetor insert must show stamping "8.5"



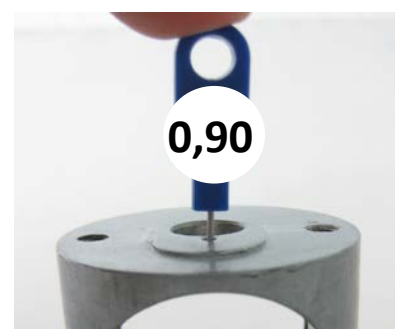
Angular bore of carburetor insert

Plug gauge 0,60 may not enter the bore (use jet gauge set Rotax part no. 281 920).



Vertical bore of carburetor insert

Plug gauge 0,90 may not enter into bore (use jet gauge set Rotax part no. 281 920).



Atomizer

Remove atomizer from carburetor body by means of venturi tool set (Rotax part no. 676 034); Atomizer, total length: 23,75 +/- 0,45 mm



Atomizer, length of cylindrical part: 15,75 +/- 0,25 mm



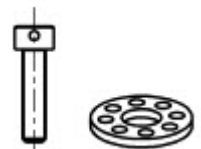
Atomizer, dimension of cutaway: 6,00 +/- 0,15 mm



Atomizer, diameter of cross bore: 4,05 +/- 0,15 mm



Optional items Rotax part no. 240 184 (2 x Allen screw) and Rotax part no. 261 552 (1 x main jet cup) are legal to be used. These parts optionally replace the parts 262 020 and 261 550 in the case of sealing a carburetor.



Specific regulation for Dellorto VHSB 34 XS

Carburetor slide shows digits "45" in casting.

Jet needle must be stamped with "K57".

Two floats marked "4,0 gr" are legal to be used only

Idle has to be stamped with "60".

Idle emulsion tube has to be stamped with "45"

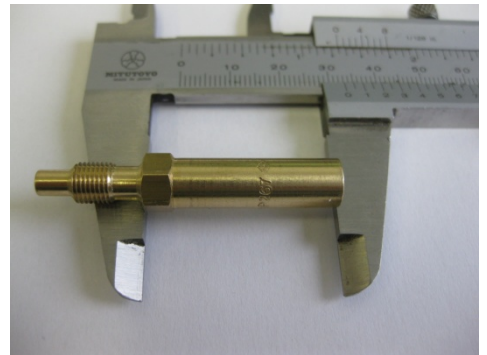
Needle jet

Stamped with "DP267"

Total length: 51,0 +/- 0,3 mm



Length of bottom section: 33,0 +/- 0,2 mm



Carburetor insert must show stamping "12,5"



Fuel pump, fuel filter

MIKUNI diaphragm pump, (see picture) must be used and must be mounted as shown in the illustration.

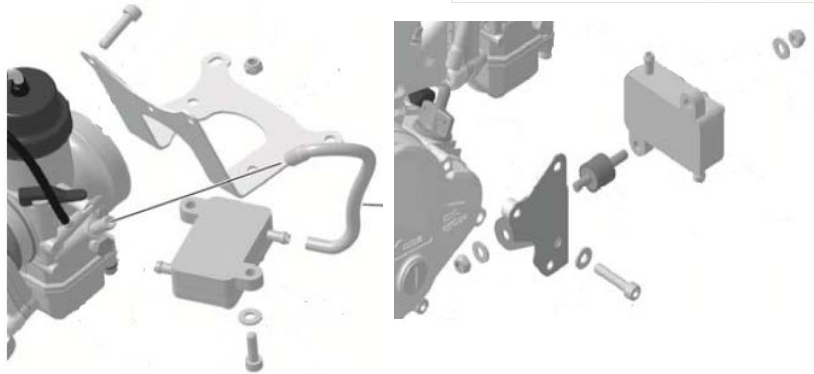
125 Junior MAX and 125 MAX

Fuel pump must be mounted on the bottom side of the support bracket for the intake silencer (left illustration).

125 MAX DD2

Fuel pump must be mounted on the support bracket, marked 651 055, attached to the clutch cover (right illustration).

Mounting the fuel pump with the two original rubber buffers to the chassis is an allowed option. In this case the fuel pump must be mounted below the inlet center line of the carburetor.



Fuel filter

Two versions of original fuel filter are legal to be used (see pictures) Except the fuel line, the fuel pump and the original fuel filter no additional parts are legal to be mounted between fuel tank and carburetor.



Radiator

The removal of the thermostat from the cylinder head cover is an allowed modification.

Radiator must be mounted with all components as shown in the respective illustration.

To apply tape (neutral tape without advertising only) around the radiator is an allowed modification to control the air flow through the radiator.

Tape may not be removed from the radiator during operation on the track.

Any other non original device to control the air flow through the radiator is prohibited.

125 Junior MAX and 125 MAX

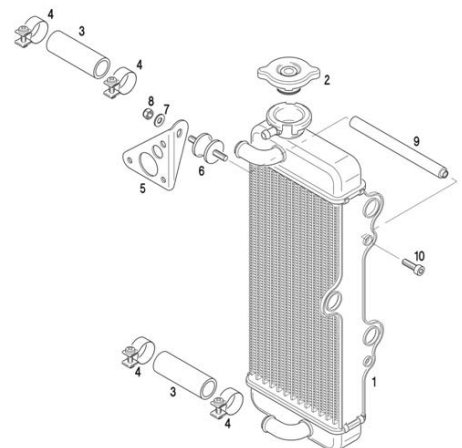
The radiator has to be mounted on the right side of the engine.

Three different versions as shown in the illustrations are legal to be used.

Version 1

Cooling area: Height = 290 mm, width = 133 mm

Thickness of radiator: 32 mm

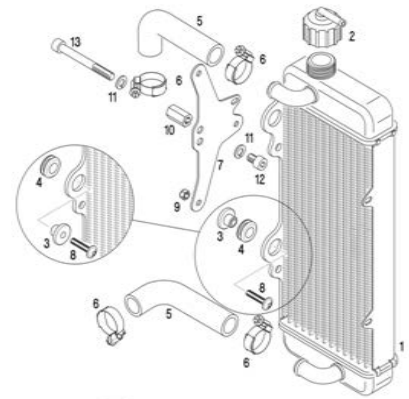


Version 2

Cooling area: Height = 290 mm, width = 133 mm

Thickness of radiator: 32 mm

The support plate (pos. 7) enables two different mounting positions (height) of the radiator. Both mounting positions are legal to be used.

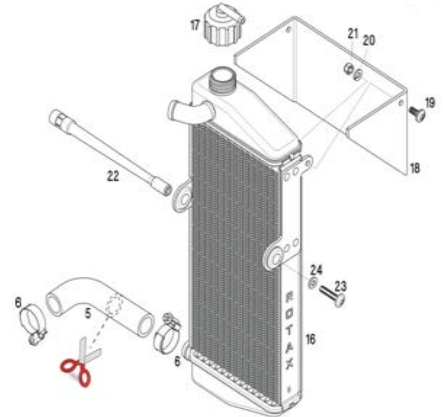


Version 3

Cooling area: Height = 290 mm, width = 138 mm

Thickness of radiator: 34 mm

Radiator must be stamped on the side with the wording "ROTAX". To remove the original flap is an allowed modification.



125 MAX DD2

The radiator has to be mounted on the left side of the driver seat.

The highest point of the radiator with cap may not be higher than 400 mm above the main tube of the kart chassis.

Two different versions as shown in the illustrations are legal to be used.

Version 1

Cooling area: Height = 284 mm, width = 202 mm

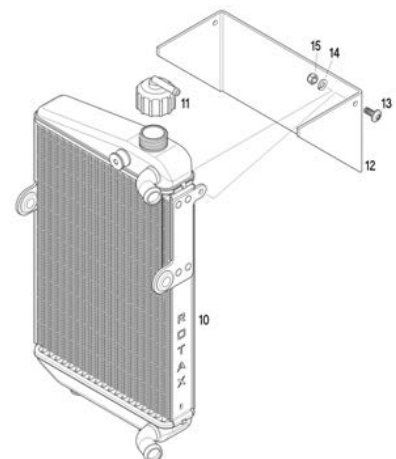
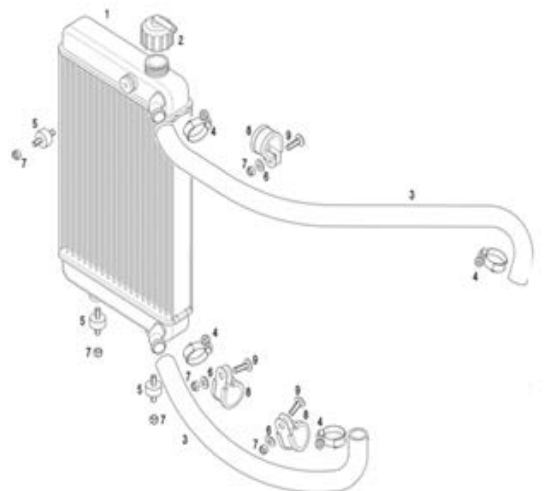
Thickness of radiator: 32 mm

Version 2

Cooling area: Height = 290 mm, width = 196 mm

Thickness of radiator: 34 mm

To remove the original flap is an allowed modification.



Engine coolant

Plain water without any additives has to be used.

Exhaust system

Two versions of original exhaust sockets are legal to be used.

Version 1, without gasket ring (left illustration)

Version 2 with gasket ring (right illustration)

At version 2 the measurement (C) must be at least 15,5 mm.



The use of maximum 4 pieces of original Rotax exhaust springs, to fix the exhaust system to the cylinder is allowed. (a "safety wire" in the exhaust flange area is not allowed).

Original exhaust system as supplied by Rotax is mandatory to be used.

Welding at the exhaust system is only allowed in the case of a repair.

Allowed modifications on the original exhaust systems are:

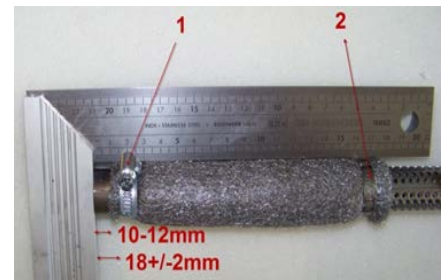
- ▶ Replacing the original rivets of the silencer end cap by 4 mm metric screws and corresponding locking nuts.
- ▶ Replacing the isolating mat (just one original isolating mat may be fitted) inside the silencer and the silencer end cap with perforated tube by original Rotax spare parts.
- ▶ Welding a socket (in a distance of 50-80 mm from the ball joint) on the top of the exhaust system for measuring the exhaust gas temperature.
- ▶ Addition extra elements after the original silencer for further noise reduction.
- ▶ Additional to the standard isolation mat a steel isolation mat (Rotax part no. 297 983) of the square dimension of 165 +10 mm is legal (not mandatory) to be assembled underneath the standard isolation mat according to the illustration.

Clamp (1) must be fitted at a distance of 18+/-2mm, measured from the end of the tube.

Clamp (2) must be fitted at the end area of the steel isolation mat.

The measurement 10-12 mm from the end of the perforated tube to the beginning of the steel isolating mat is a specification for assembly purpose only!

Both clamps (1 and 2) are mandatory to be fitted and tightened.



125 Junior MAX and 125 MAX

Three versions of exhaust systems are legal to be used.

Version 1, tuned pipe and silencer are one piece. The silencer is welded to the 180° elbow and the tuned pipe (top illustration).

Version 2, tuned pipe and silencer are one piece. The silencer is welded to the 180° elbow. Two springs fix the silencer to the tuned pipe (bottom illustration).

Following measurements are valid for version 1 and 2:

Silencer end cap, diameter of hole: 21,0 mm (maximum).

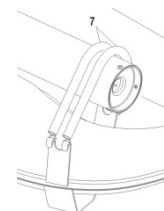
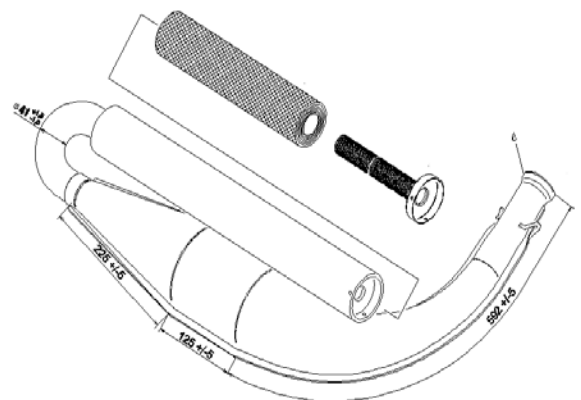
Length of inlet cone: 592 mm +/-5 mm (measured on outside from beginning of exhaust pipe until beginning of cylindrical part).

Length of cylindrical part of exhaust pipe:

125 mm +/-5 mm.

Length of end cone: 225 mm, +/-5 mm.

Outside diameter of 180° bent tube: 41mm +1,5 mm/-1,0 mm (measured at beginning and end of bend).



Version 3, tuned pipe with 180° elbow and silencer are two separate pieces. The silencer is fixed with 2 springs to the 180° elbow and two springs to the tuned pipe. The silencer can be turned that the 90° elbow outlet of the silencer shows either downwards towards the asphalt (preferred version for lowest noise emissions) or towards the back.

It is also allowed to use the silencer end cap (without 90° elbow) and perforated tube of version 1 and 2.



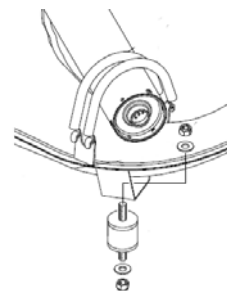
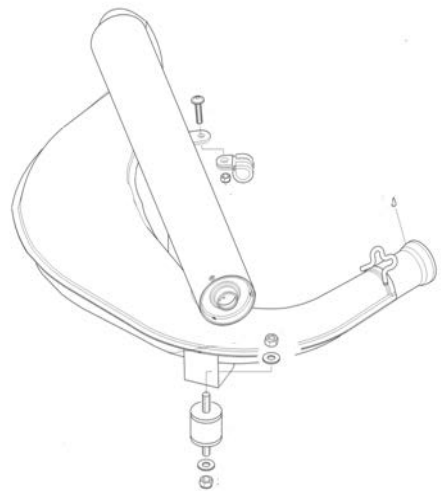
125 MAX DD2

Three versions of exhaust systems are legal to be used.

Version 1, tuned pipe and silencer are one piece. The silencer is welded to the elbow and the tuned pipe (top illustration).

Version 2, tuned pipe and silencer are one piece. The silencer is welded to the 180° elbow. Two springs fix the silencer to the tuned pipe (bottom illustration).

Following measurement is valid for version 1 and 2:
Silencer end cap, diameter of hole: 19,6 +/-0,2 mm.
This silencer end cap (without 90° elbow) may be used for version 1 and 2 only.



Version 3, tuned pipe with 180° elbow and silencer are two separate pieces. The silencer is fixed with 2 springs to the 180° elbow and two springs to the tuned pipe. The silencer can be turned that the 90° elbow outlet of the silencer shows either downwards towards the asphalt (preferred version for lowest noise emissions) or towards the back. Silencer end cap with 90° elbow is mandatory to be used for version 3.



Additional seat support (125 MAX DD2)

On the engine side maximum one additional seat support is allowed to be used. The additional seat support must be fastened to the engine using the threaded hole designed for this purpose.





Rotax MAX Challenge Technical Regulation 2015
Appendix for 125 Micro MAX and 125 Mini MAX
(The Technical Regulations 2015 replace the Technical Regulations 2014)
Edition 2014 12 12

ZA MOTORJE ROTAX MAX PRVE GENERACIJE
ZA MOTORJE ROTAX MAX EVO

The 125 Junior MAX engine is the basis for the engine configurations 125 Micro MAX and 125 Mini MAX.

In this appendix just the deviations for 125 Micro MAX and 125 Mini MAX from the standard Technical Regulation for the 125 Junior MAX engine are defined.

Appendix on 1.1, Categories

Cadet karts used in the Rotax Mojo MAX Challenge (RMC) and International Rotax Mojo MAX Challenge Events (IRMCE) are divided into the following classes:

125 Micro MAX

125 Mini MAX

Classes	125 Micro MAX	125 Mini MAX
Age limits	8 – 10 years	10 – 12 years
Chassis wheel base	950 mm	1010 or 1040 mm
Weight limits	105 – 115 kg	125 – 135 kg
Dry tires	Mojo C2	Mojo D1
Wet tires	Mojo CW	Mojo W2

Appendix on 5.1, Squish gap

125 Micro MAX/evo minimum = 2,40 mm

125 Mini MAX/evo minimum = 2,40 mm

To achieve the defined minimum squish gap one spacer (Rotax part no. 626 420, with same shape as cylinder base gasket) in combination with at least two cylinder base gaskets (one below the spacer and one above the spacer) must be used. The squish gap must be measured with a certified slide gauge and by using a 3 mm tin wire (Rotax part no. 580 132).

Appendix on 6.6, Ignition system

Both versions of ignition systems (Denso and Dellorto) are legal to be used.

Version 2, Dellorto ignition system

The electronic boxes are labeled with stickers and are still legal also if the sticker disappeared.

125 Micro MAX and 125 Mini MAX: "666814, 125 MAX evo"

The ECU tester has to show following result:

125 Micro MAX and 125 Mini MAX

ECU TEST OK

125 MAX evo

Appendix on 6.11, Radiator

125 Micro MAX

A specific radiator has to be used for the 125 Micro MAX engine.

Two different versions as shown in the illustrations are legal to be used.

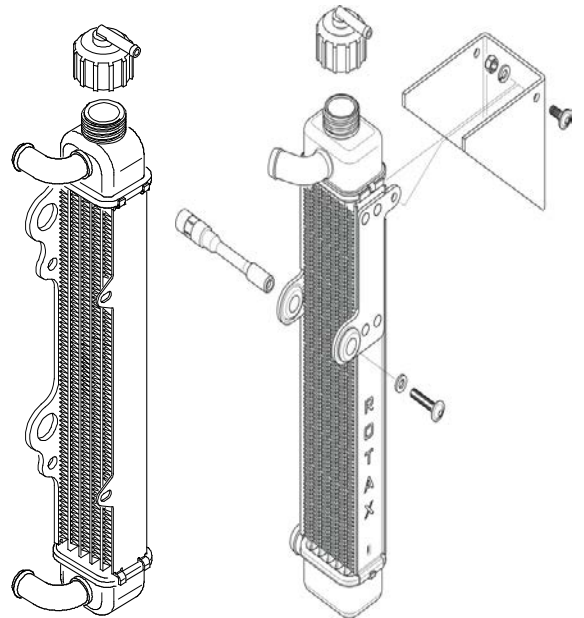
Cooling area:

Height = 280 – 300 mm

Width = 58 – 62 mm

Thickness of radiator = 30 – 34 mm

To remove the original flap is an allowed modification (valid for version 2, right illustration).



Appendix on 6.13, Exhaust system

Just exhaust sockets with gasket ring are legal to be used.

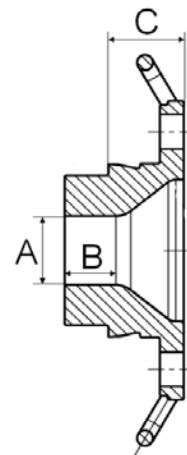
Diameter (A) must apply for a length (B) of at least 12 mm.

Maximum inner diameter (A) of exhaust sockets are:

125 Micro MAX: 18,20 mm

125 Mini MAX: 20,10 mm

The measurement (C) must be at least 18,5 mm.



125 Micro MAX

A specific exhaust system has to be used for the 125 Micro MAX engine.

The inner diameter of the elbow outlet at the silencer end cover has to have a minimum measurement of 21 mm

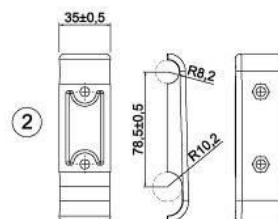
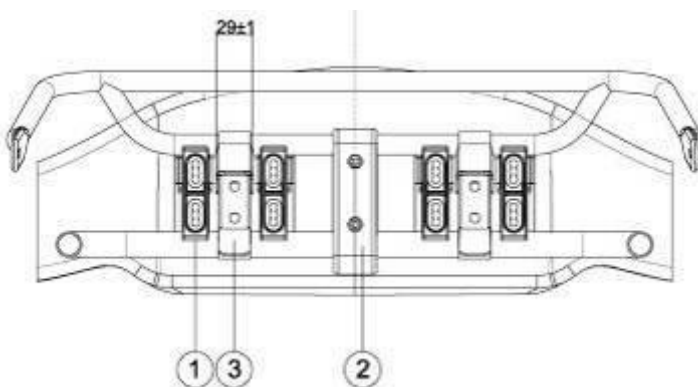
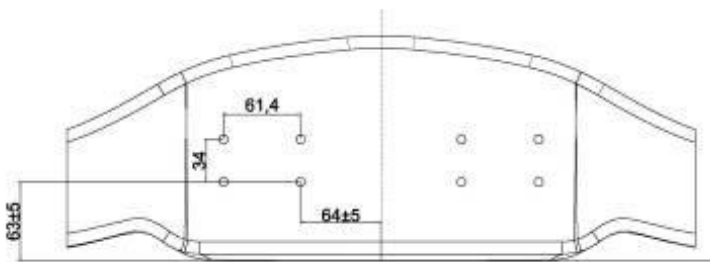


PRILOGA 3.1. - OKVIR

S tem naj vas obvestimo o novih pravilih, ki jih CIK uvaja v zvezi z namestitvijo sprednjih spojlerjev. Od januar 2015 CIK predpisuje na dirkah (po pravilih CIK) le sprednje spojlerje novih homologacij (ki poteče leta 2020).

Herewith we inform you regarding the new rules that CIK is introducing regarding to the installation of the front fairings, adopted also by ACI-CSAI for minikart:

- from January 2015 CIK will accept, in races following CIK rules, only front fairing of new homologation (expiring in 2020) having nr° 8 fixing points, in the same position for all the manufacturers, where fixing with screws nr° 2 mounting brackets at release system, with the purpose of reducing the misconduct of the drivers.





Considering that the different national federations (ASN) and the organizers of the various mono-categories will decide if using this CIK system or not, point still not known for all, KG has realized also a traditional mounting system to fix with screws in replacement of the CIK brackets for all the new homologations of front fairing (expiring in 2020); so the model BURU, cod. SA.503 (homologated again but with none aesthetics change that can influence stickers), the model FP7, cod. SA.504 (homologated again but with none aesthetics change that can influence stickers) and the new model 505, cod. 505.

The old model CIK/11 EVO has not been updated in this way and so not more homologated for CIK races. It will remain available out of homologation, only in black color.

Like anticipated before also the MK14 minikart front fairing will be subject to this review to the mounting area, without changing the aesthetics, to be compliant to the ACI-CSAI rules, that will introduce also for mikart the CIK mounting. For the minikart ACI-CSAI homologation will not be necessary a new homologation, but it will be enough a six years prolongation, with an updating to the fiche in the mounting area, without changing the homologation numbers.

So all the homologated KG front fairing will only be more available with the 8 threaded elements, where fixing with screws the CIK brackets or the traditional, that are anyway different to what fixed now on FP7 model, that will be stopped.

We remember that adopting the CIK mouting system it will be not necessary none change the frame.

In the next page we detail with pictures, model to model, the news introduced regarding the mountings:

MODEL BURU, cod. SA.503

MOUNTING AREA WITH HOMOLOGATION 21/CA/14 EXPIRING AT 31/12/2014, NO MORE AVAILABLE FROM JANUARY 2015



MOUNTING AREA NEW HOMOLOGATION 4/CA/20, NOW AVAILABLE



MOUNTING WITH CIK BRACKET FOR RACES FOLLOWING CIK RULES



MOUNTING WITH TRADITIONAL BRACKETS (DO NOT RELEASE WITH FRONT BUMPERS IN CONTACT TO THE FRONT FAIRING)



MODEL FP7, cod. SA.504

MOUNTING AREA HOMOLOGATION 1/CA/17 STILL NOT EXPIRED, BUT NOT MORE ACCEPTED BY CIK, SO NO MORE AVAILABLE FROM JANUARY 2015



MOUNTING AREA NEW HOMOLOGATION 6/CA/20, NOW AVAILABLE



MOUNTING WITH CIK BRACKET FOR RACES FOLLOWING CIK RULES



MOUNTING WITH TRADITIONAL BRACKETS (DO NOT RELEASE WITH FRONT BUMPERS IN CONTACT TO THE FRONT FAIRING)



MODEL 505, cod. SA.505

MOUNTING AREA HOMOLOGATION 2/CA/20



MOUNTING WITH CIK BRACKETS FOR RACES FOLLOWING CIK RULES



MOUNTING WITH TRADITIONAL BRACKETS (DO NOT RELEASE WITH FRONT BUMPERS IN CONTACT TO THE FRONT FAIRING)



MODEL MK14 (MINIKART)

MOUNTING AREA ACI-CSAI 02/CZ/14 HOMOLOGATION, NO MORE ACCEPTED FROM 01/02/2015



MOUNTING AREA ACI-CSAI 02/CZ/14 HOMOLOGATION, PROLONGATED UNTIL 2020, WITH AN UPDATING IN THE FICHE



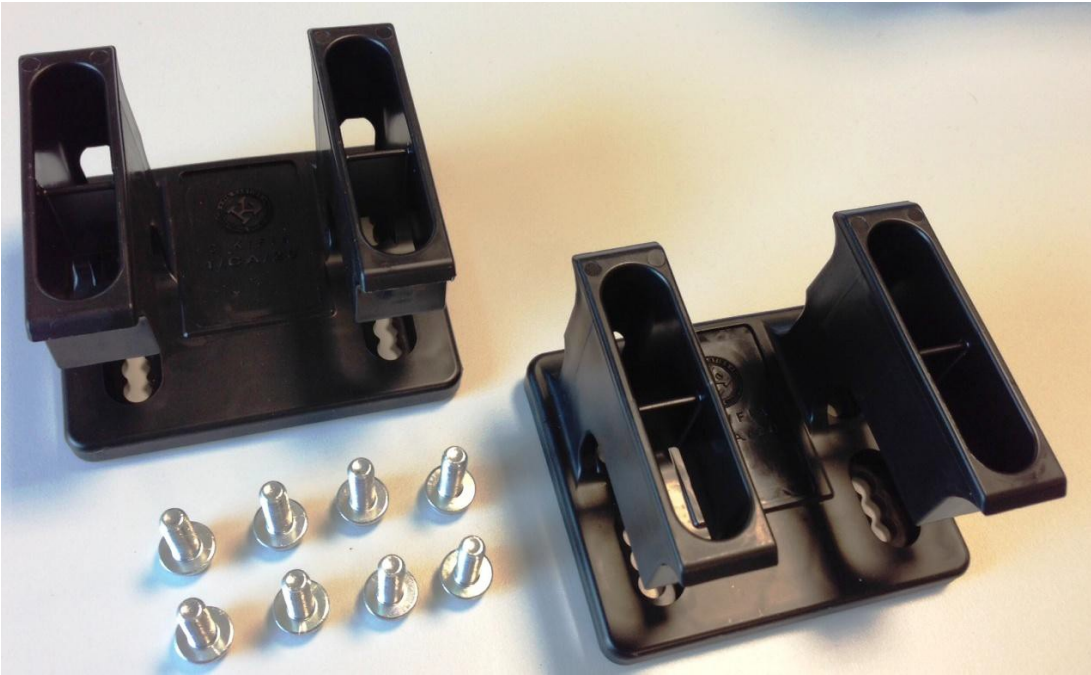
Di seguito elenchiamo i codici relativi agli attacchi nella varie configurazioni:

MOUNTING WITH CIK BRACKETS FOR RACES FOLLOWING CIK RULES



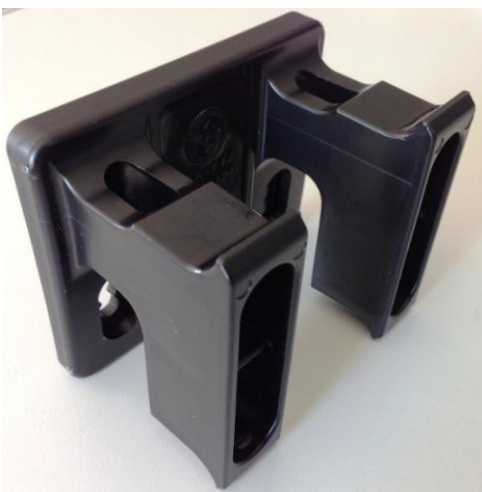
MOUNTING WITH TRADITIONAL BRACKETS (DO NOT RELEASE WITH FRONT BUMPERS IN CONTACT TO THE FRONT FAIRING)





AT.022.NE CIK MOUNTING BRACKET KIT FOR FRONT FAIRING

RC.205.NE BLACK SINGLE MOUNTING CIK BRACKET FOR FRONT FAIRING





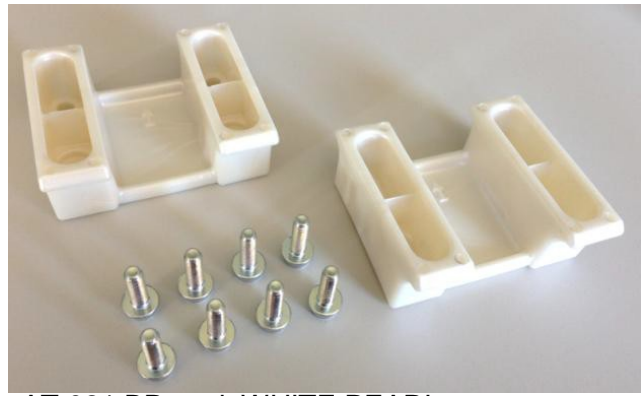
AT.030.NE CIK FRONT FAIRING MOUNTING KIT BLACK BUMPER SUPPORT

AT.030.RS CIK FRONT FAIRING MOUNTING KIT RED BUMPER SUPPORT





AT.021.NE BLACK MOUTING BRACKET KIT



AT.021.BP col. WHITE PEARL

RC.206.NE BLACK SINGLE MOUTING BRACKET



RC.206.BP col. WHITE PEARL



AT.002
SPRING HOOKS



AT.050.RS
RED BUMPER SUPPORT



AT.050.NE
BLACK BUMPER SUPPORT

